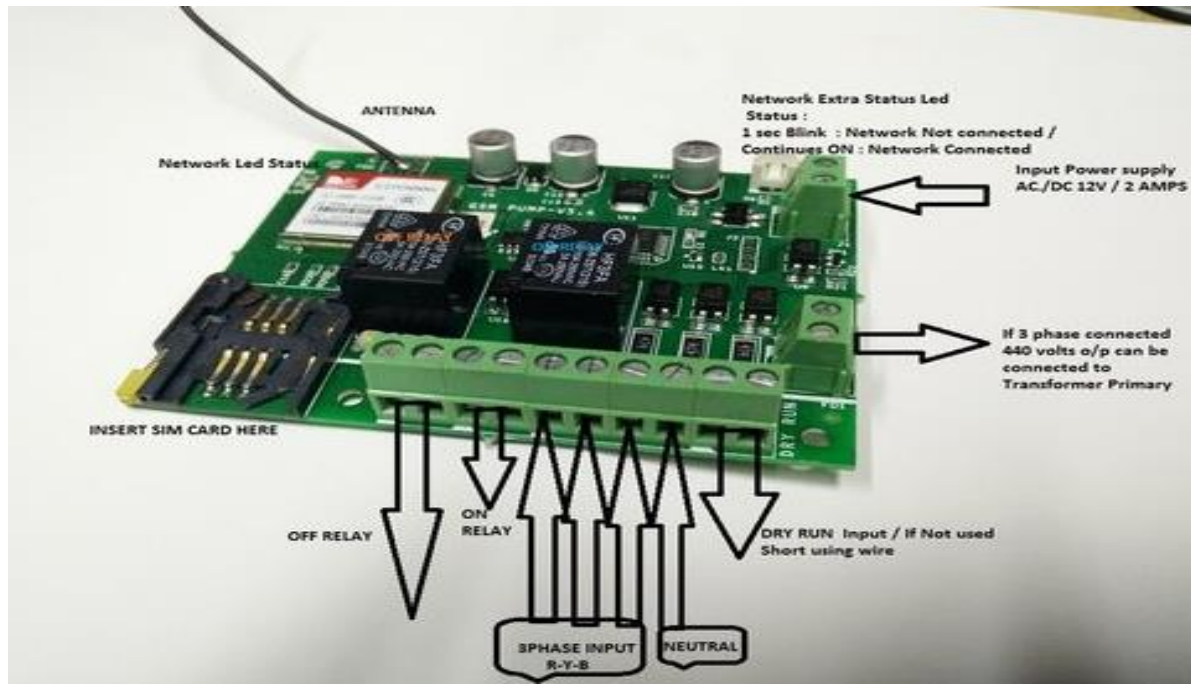


## GSM Motor Control with 3 Phase detection



### HOW TO SEND SMS COMMAND

| SEND SMS               | REPLY SMS      | DESCRIPTION  |
|------------------------|----------------|--|
| SEND SMS ONLY <b>C</b> | NUMBER CHANGED | To store owner Number  |
| <b>1</b>               | PUMP ON        | PUMP ON  |
| <b>2</b>               | PUMP OFF       | PUMP OFF   |
| <b>3</b>               | AUTO MODE:OFF  | AUTO mode OFF(Initially if there is no current, after current comes motor will not automatically ON)                   |
| <b>4</b>               | AUTO MODE:ON   | AUTO mode ON (Initially if there is no current, after current comes motor will automatically ON and gives SMS Replay ) |

|  |  |  |
|--|--|--|
| <b>10</b>  | NOW MESSAGES<br>WILL BE ACCEPTED<br>ONLY FROM<br>REGISTERED<br>NUMBER ONLY | Messages will be Accepted<br>From Only Registered<br>Number          |
| <b>11</b>  | NOW MESSAGES<br>WILL BE ACCEPTED<br>FROM ALL NUMBER                        | Messages will be Accepted<br>From Any Number                         |
| <b>BL*xxx#</b> ( Ex: For Airtel<br>Balance enquiry is *123#<br>for that BL*123#) | Balance:70.06<br>Expiry:Dec29 2037   | To Check the Balance of SIM<br>card                                  |
| Note: commands <b>1,2,3,4,10,11</b> is only from registered numbers.             |  |  |
| <b>5</b>   | MODEL-1  | MODE-1(3-PHASE MODE)<br>connect all the 3 phase                      |
| <b>6</b>   | MODEL-2  | MODE-2(WITHOUT 3-<br>PHASE MODE) no need of<br>connecting any phase. |
| <b>7</b>   | MODEL -1 S:ON  | To Check the STATUS of<br>the Starter                                |
| <b>S</b>   | S10  | To Check the Signal Strength<br>of the MODEM                         |
| <b><u>MISSED CALL COMMAND</u></b>  |  |  |
| FIRST MISSED CALL  | PUMP ON WITH CALL  | PUMP ON  |
| SECOND MISSED<br>CALL  | PUMP ON WITH CALL  | PUMP OFF   |

## Specification

- Input voltage-12v AC/DC-2AMPS.
- Output relay switching MAX capacity is 230VAC /10amps per relay.
- Can Accept SIM card of any NETWORK (SIM Card SOCKET-normal Type).

## Features

- SIMPLE SMS BASED SWITCHING ON AND OFF THE PUMP.
- MESSAGE 1 TO ON THE PUMP AND MESSAGE 0 TO OFF THE PUMP.
- MISSED CALLED BASED SWITCHING AFTER 3 RINGS.
- AUTO MODE AND MANUAL MODE OPTION.
- OPTION FOR ACCEPTING MESSAGES FORM REGISTERD NUMBER OR ANY NUMBER.
- MOBILE NUMBER CHANGING OPTION.
- OPTION FOR CHANGING THE DELAY OF THE PUMP ON TIME (RELAY ON TIMING AND OFF TIMING).
- OPTION FOR CHECKING THE SIM CARD BALANCE.
- OPTION FOR CHANGING FORM 3 PHASE TO SINGLE PHASE.
- OPTION FOR CHECKING THE STATUES OF THE PUMP.
- OPTION FOR CHECKING THE SIGNAL STRENGTH OF THE DEVICE.
- 3 PHASE DETECTION SYSTEM.MOTOR DOES NOT START IF ALL THE 3 PHASE IS NOT PRESENT.
- SMS REPLY FOR EVERY OPERATION WITH FEEDBACK.
- POWER ON SMS WITH THE STATUES DISPLAY.
- DRY RUN SENSOR CAN BE CONNECTED AT THE DRY RUN TERMINAL OTHERWISE SHORT THE TERMINAL USING WIRE (SENSOR OPTIONAL).
- MOTOR/PUMP TRIP (POWER GETS OFF AND ON) REPLAY SMS WILL GET.